

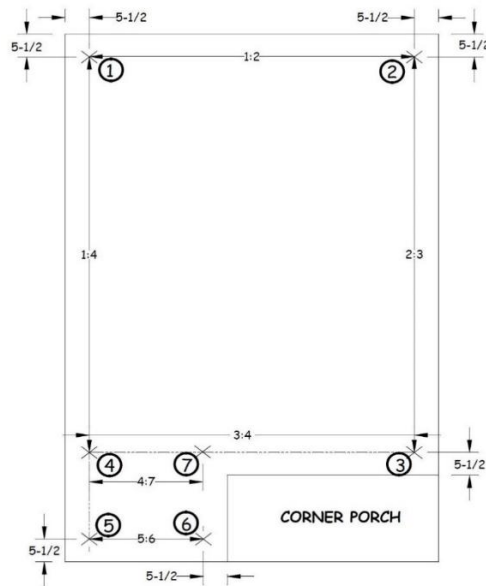
Quick Reference Guide

March 2025
Version 25.0

Chapter 3 - Laying Out Exterior Walls

Layout Exterior Corners	<ol style="list-style-type: none"> 1. Before laying out walls on the deck, check the perimeter of the deck and stair opening for excess decking or glue and trim as needed. 2. At each corner measure in 5½" from the outside surface of rim box. Using a square and sharp pencil, create a large initial corner mark (an X, 1-2" in length). 3. Remove the "Wall Layout Worksheet" page (figure 3-1) from the manual for recording wall measurements.
Create a Rectangle	<ol style="list-style-type: none"> 4. With long steel tape, 'burn a foot', and carefully measure the lengths of opposite walls using the initial corner marks from "2" above. Record on the worksheet. <ul style="list-style-type: none"> • If opposite wall lengths differ by 1/8" <u>OR MORE</u>, add ½ the difference at <u>each</u> end of the shorter wall • If walls differ by <u>less than 1/8"</u>, ignore the difference and proceed to Step 5. • Remark the corners. <p>NOTE: If house includes a corner porch, see Steps 9,10 below.</p>
Square the Rectangle	<ol style="list-style-type: none"> 5. With a long steel tape, <u>burn a foot</u> and carefully measure the diagonals between the corner marks to check for square. Record on the worksheet. 6. If they differ by 1/8" <u>or more</u>, adjust the marks as follows: <ul style="list-style-type: none"> • At EACH end of the SHORT diagonal, lengthen the LONG wall by ½ the difference. • Recheck for square and adjust as needed.
Check for Rim Bow	<ol style="list-style-type: none"> 7. Check all four sides of the rim box for bow. Pull a tight string line over the new corner marks at each end of the wall. 8. Measure between the string line and the outside of the rim board every 4' to 5' and record on the Worksheet. <ul style="list-style-type: none"> • If the maximum measurement is <u>greater than 5⁄8"</u>, move BOTH ends of the line equally toward the rim board until maximum = 5½". Remark the deck at each end. • If the difference is <u>equal to or less than 5⁄8"</u>, ignore the difference and proceed to Step 9. <p>NOTE: If Bow adjustment is ≥3/8", recheck the rectangle for square and adjust as cited in 5&6 above.</p>
Layout Walls on L-Shaped Deck	<ol style="list-style-type: none"> 9. Square and check bow of main deck as done in Steps 4-8 above 10. Adjust front deck extension (see Fig on back) <ul style="list-style-type: none"> • Stretch tight string line Point 3 to Point 4. Measure line 5-6 and use measurement to locate Point 7 on Line 3-4. Mark deck with X • Measure Line 4-5 and Line 6-7. If <u>not equal</u> adjust Point 5 or Point 6 to ensure Line 5-6 is parallel with Line 3-4 • In similar manner, adjust Points 6 or 7 to ensure Line 6-7 is parallel with Line 1-5 • Check porch walls for bow and adjust as necessary.
Complete Layout	<ol style="list-style-type: none"> 11. Once all corner mark adjustments have been made, carefully re-measure the precise distances between the corner marks <u>in all directions</u>. Adjust the marks as needed to ensure opposing walls differ by 1/8" or less. 12. Using these final marks, snap red chalk lines for all exterior wall locations. 13. Finally, spray all chalk lines with all clear varnish to protect them from the elements.

(Continued on next page)



Quality Points

Chapter 3 - Laying Out Exterior Walls

- Main floor wall layouts are complete:
 - Perimeter of deck and stair opening has been trimmed of all excess decking and glue
 - Exterior and interior walls are marked on deck
 - Opposing walls are of equal length (within 1/8")
 - Rectangle is square (within 1/8")
 - Corner porch (if existing) properly laid out
- All wall plates are cut and marked for studs, windows, and doors
- Verify both ends of long wall bottom plates 5 1/2" from end of plates (marks must align with short wall chalk lines)
- All Studs (X and SX), Kings (K), Jacks (J) marked, door and window areas labeled with size on top edges of wall plates
- All Wall plates are securely nailed together with duplex nails
- 2 exterior short walls are off the deck and set aside