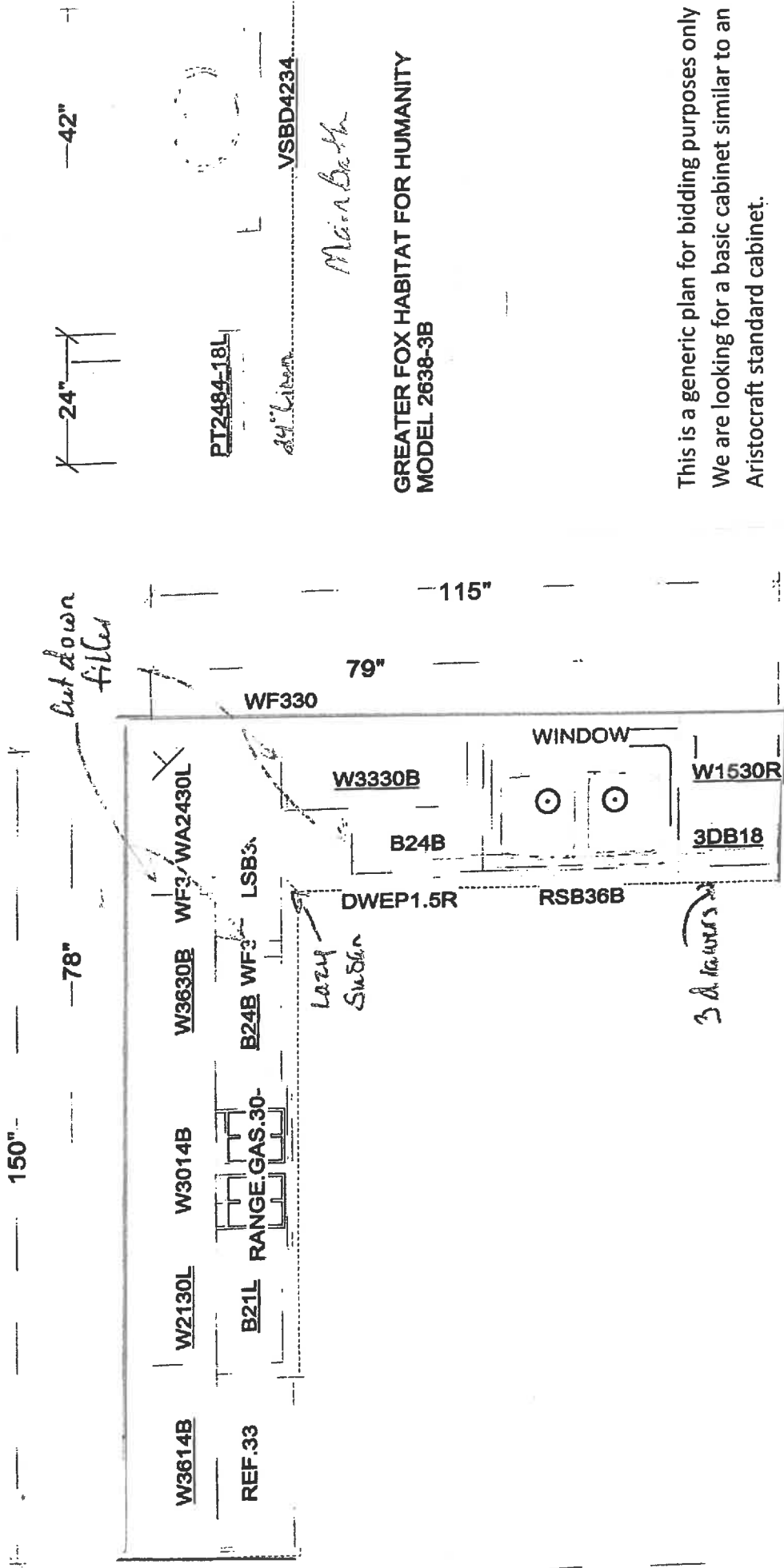


Greater Fox Cities Area Habitat for Humanity Cabinet Bid Specs

This bid is for all Habitat New Construction Projects for the entire year. The number of bedrooms is dependent on family size (See the included typical plan). The number of new houses will usually be 13 – 15 projects built throughout the year. A schedule of work showing work dates will be provided at the beginning of each build year for all projects. This allows the supplier to schedule Habitat work well in advance of the date needed. This schedule will be provided for all houses at the beginning of the year. Cabinets will typically be needed from May – November of each year.

Please see the accompanying cabinet layout. This is a generic layout and is being used for bidding purposes only. Habitat builds basic, decent, safe and affordable houses for families that would not otherwise have access to home ownership. Therefore we utilize good quality but basic products for our houses. Please bid cabinet lines that provide basic features in line with the items listed on the cabinet takeoff.

For Questions please contact Howie at: howief@foxcitieshabitat.org 920-574-4183 or Roger at: rogerr@foxcitieshabitat.org 920-277-3189



VSBD4234

Main Bath

**GREATER FOX HABITAT FOR HUMANITY
MODEL 2638-3B**

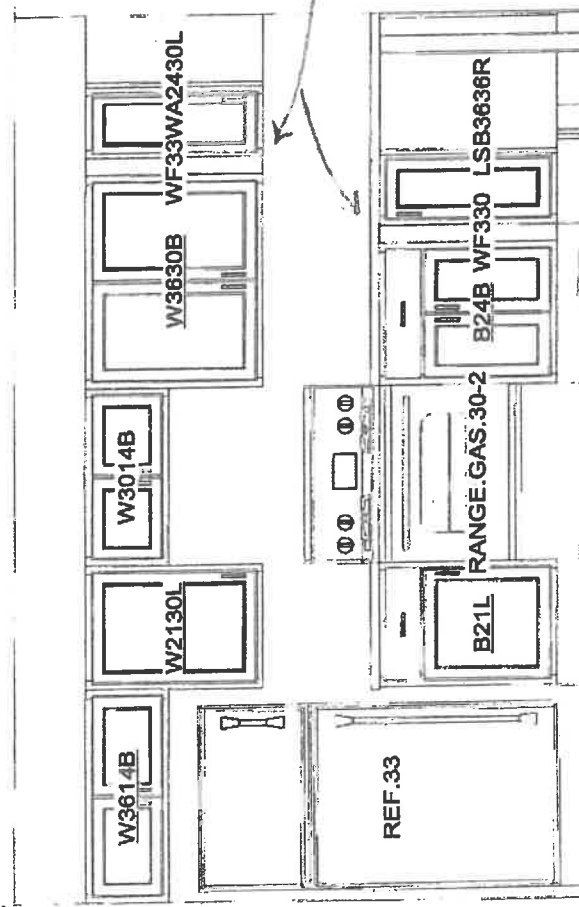
This is a generic plan for bidding purposes only
We are looking for a basic cabinet similar to an
Aristocraft standard cabinet.

Please figure the following:

- Flat panel oak cabinets
- Tripple Cove laminate counter tops
- Toe Kick
- Scribe Moldings
- No cabinet pulls

*Kitchen
Elevation*

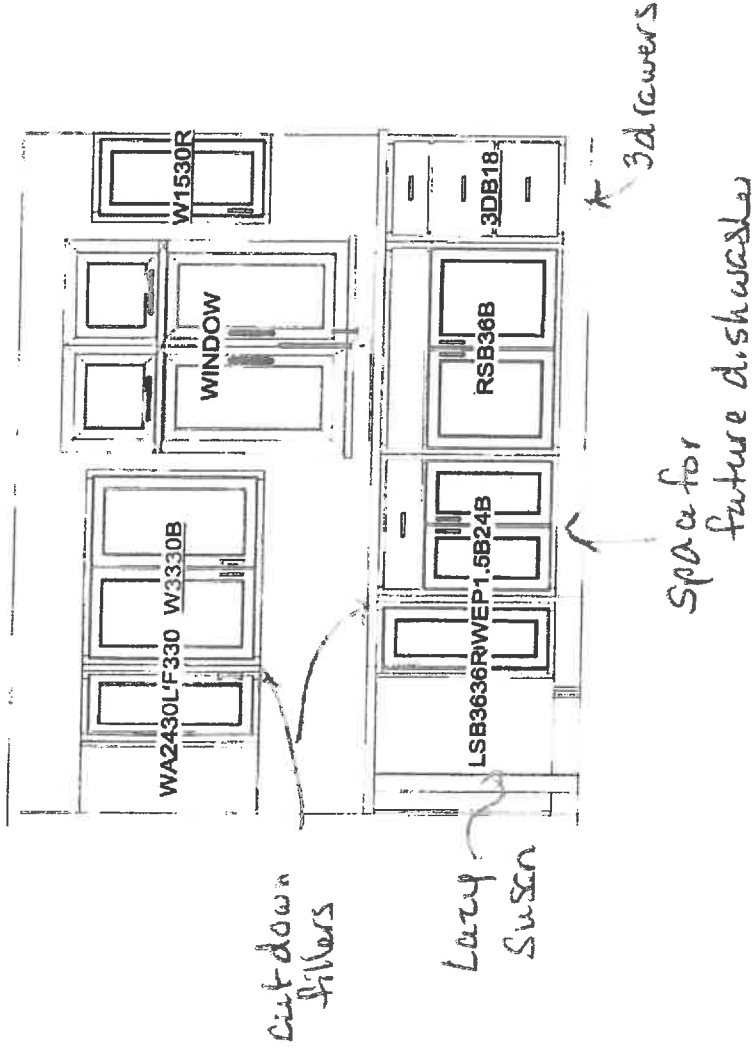
150"



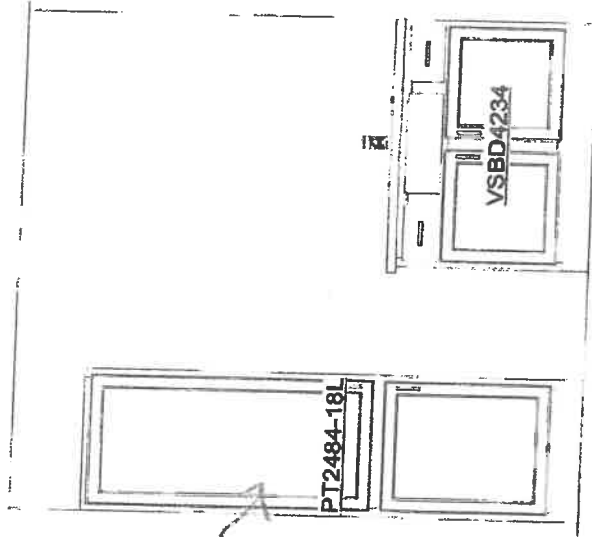
Cut down fillers

Lazy Susan

Kitchen
Elevation



Main Bath
Elevation



32 1/2 high
vanity

24" Linen
18" deep
adj
Shelves